



GREEN POWER
OPERATED PLANT HIRE



PLANT HIRE PRODUCT BROCHURE

Hire Desk: 0121 355 4083

hiredesk@greenpower-plant.co.uk

www.greenpower-plant.co.uk

- Excavators • Telehandlers • Dumpers • Scissor Lifts • Cherry Pickers • Vacuum Excavators
- Rollers • Generators • Lighting Towers • Bowsers • Site Accommodation





GREEN POWER
OPERATED PLANT HIRE

CONTENTS

About Green Power Plant	4-5
Excavators (Up To 35 Tonne)	6-9
Telehandlers	10-12
Forklifts	13
Heavy lifts & Roto Telehandlers	14
Skid Steers	15
Rollers (Trench, Twin Drum & Self Propelled)	16-17
Dumpers (Straight & Swivel)	18-19
Scissor Lifts	20-22
Booms	23-25
Generators	26-27
Lighting Towers	28
Fluid Storage	29
Pressure Washers	30
Site Welfare	31
Green Power Scaffolding	32
Eco & Hybrid Equipment	33
Green Power Plant Sales	34
Industrial Heaters	35
Green Power Construction Hoists	36
Plant & Machine Operators	37
Flood Services	38
Hire Link UK Tool Hire	39
Scaffold Erection / Alloy Towers	40
Vacuum Excavators	41-42
Green Power Waste Services	43
Shark Attachments	44-48
Credit Account Form	49-50
Green Power Construction Site Services	51

Welcome to **Green Power Plant**

Green Power Plant is a specialist plant hire operation. We offer our clients self drive machines for hire and operated plant hire anywhere in the UK.

SO WHY CHOOSE US?

Our customers operate on a national basis, generating high volumes of often complex equipment requests. These must be coordinated efficiently, delivering the right machine or equipment to the right place, every time, to make sure that contracts and sites can keep on working.

Green Power Plant consists of knowledgeable hire controllers who support our busy clients, day in day out. It offers a stress free solution for our customers, who simply place their orders via either a phone call or email to their dedicated, account manager, who will source everything they need for next day delivery, anywhere in the UK.

Each day, **Green Power Plant** handles hundreds of phone calls from small building companies as well as some of the most prestigious contractors in the country.

**We operate a one solution
service for any site
requirements UK wide.**

Specialising in...

Telehandlers

Excavators

Dumpers

Cherry Pickers

Scissor Lifts

Vacuum Excavators

Site Accommodation





GREEN POWER
VACUUM EXCAVATORS

FOR HIRE



**READY
FOR HIRE**
0121 355 4083

Hitachi ZX19U



Dimensions (ARM: 1.13m)

Operating Weight:

1880kg

Length:

3540mm

Width:

1280mm

Height:

2380mm

Max Digging Depth:

2390mm

Max Reach:

3990mm

Max Cutting Height:

3640mm

Hitachi ZX26U



Dimensions (Dipper Length: 1300mm)

Operating Weight:

2720kg / 5996.5lbs

Length:

4100mm / 13ft 5in

Width:

1500mm / 4ft 11in

Cab Height:

2430mm / 7ft 11in

Max Digging Depth:

2730mm / 8ft 11in

Max Reach:

4570mm / 14ft 11in

Max Cutting Height:

4260mm / 13ft 11in

Hitachi ZX33U



Dimensions (Dipper Length: 1520mm)

Operating Weight:

3510kg / 7738.2lbs

Length:

4530mm / 14ft 10in

Width:

1550mm / 5ft 1in

Cab Height:

2480mm / 8ft 1in

Max Dig Depth:

3130mm / 10ft 3in

Max Reach:

5040mm / 16ft 6in

Max Cutting Height:

4470mm / 14ft 7in

Hitachi ZX38U



Dimensions (Dipper Length: 1720mm)

Operating Weight:

3940kg / 8686.2lbs

Length:

4760mm / 15ft 7in

Width:

1740mm / 5ft 8in

Cab Height:

2480mm / 8ft 1in

Max Digging Depth:

3460mm / 11ft 4in

Max Reach:

5410mm / 17ft 8in

Max Cutting Height:

4740mm / 15ft 6in

Hitachi ZX48U



Dimensions (Dipper Length: 1690mm)

Operating Weight:

4790kg / 10560.1lbs

Length:

5390mm / 17ft 8in

Width:

1960mm / 6ft 5in

Cab Height:

2530mm / 8ft 3in

Max Digging Depth:

3630mm / 11ft 10in

Max Reach:

5920mm / 19ft 5in

Max Cutting Height:

5820mm / 19ft 1in

Hitachi ZX85USB



Dimensions (Dipper Length: 2120mm)

Operating Weight:

8470kg / 18673.1lbs

Length:

6820mm / 22ft 4in

Width:

2350mm / 7ft 8in

Cab Height:

2550mm / 8ft 4in

Max Digging Depth:

4510mm / 14ft 9in

Max Reach:

7560mm / 24ft 9in

Max Cutting Height:

7140mm / 23ft 5in

Hitachi ZX130-6



Dimensions (Dipper Length: 3010mm)

Operating Weight:

13500kg / 29762.3lbs

Length:

7700mm / 25ft 3in

Width:

2790mm / 9ft 1in

Cab Height:

2790mm / 9ft 1in

Max Digging Depth:

5540mm / 18ft 2in

Max Reach:

8170mm / 26ft 9in

Max Cutting Height:

8600mm / 28ft 2in

All machines are fully serviced and tested before delivery!

Hitachi ZX135



Dimensions (Dipper Length: 3010mm)

Operating Weight:

14000kg / 30864.6lbs

Length:

7370mm / 24ft 2in

Width:

2690mm / 8ft 9in

Cab Height:

2790mm / 9ft 1in

Max Digging Depth:

5490mm / 18ft

Max Reach:

8240mm / 27ft

Max Cutting Height:

9290mm / 30ft 5in

Hitachi ZX210



Dimensions (Dipper Length: 2910mm)

Operating Weight:

21600kg / 47619.7lbs

Length:

9660mm / 31ft 8in

Width:

2580mm / 8ft 5in

Cab Height:

2950mm / 9ft 8in

Max Digging Depth:

6670mm / 21ft 10in

Max Reach:

9750mm / 31ft 11in

Max Cutting Height:

10040mm / 32ft 11in

Hitachi ZX225



Dimensions (Dipper Length: 2910mm)

Operating Weight:

24900kg / 54895lbs

Length:

9110mm / 29ft 10in

Width:

3290mm / 10ft 9in

Cab Height:

2950mm / 9ft 8in

Max Digging Depth:

6620mm / 21ft 8in

Max Reach:

9990mm / 32ft 9in

Max Cutting Height:

11230mm / 36ft 10in



READY FOR HIRE
0121 355 4083

EXCAVATORS

Up to 35 Tonne

14 Tonne Zero Tail



Dimensions

- Weight:**
14000kg
- Length:**
7390mm
- Width:**
2690mm
- Height:**
2790mm
- Max Digging Depth:**
5980mm
- Max Reach:**
8860mm
- Max Cutting Height:**
9690mm

22 Tonne



Dimensions

- Weight:**
22225-24100kg
- Length:**
5580-9070mm
- Width:**
3090mm
- Height:**
2950-3025mm
- Max Digging Depth:**
6570-6700mm
- Max Reach:**
9880-10010mm
- Max Cutting Height:**
9600-11230mm

35 Tonne (and above)



Dimensions

- Weight:**
34700kg
- Length:**
11220mm
- Width:**
3190mm
- Height:**
3270mm
- Max Digging Depth:**
7380mm
- Max Reach:**
11100mm
- Max Cutting Height:**
10360mm

Hire Desk: 0121 355 4083

hiredesk@greenpower-plant.co.uk | www.greenpower-plant.co.uk



All machines
are fully
serviced and
tested before
delivery!



Telehandlers 4m to 21m

**READY
FOR HIRE**
0121 355 4083

4 Metre



Dimensions

Weight:

4400kg

Length:

2920mm

Width:

1560mm

Height:

1970mm

Max Lifting Height:

4000mm

Max Lifting Weight:

2000kg

5 Metre



Dimensions

Weight:

4870kg

Length:

3590mm

Width:

1840mm

Height:

2120mm

Max Lifting Height:

5000mm

Max Lifting Weight:

2000kg

6 Metre



Dimensions

Weight:

4710kg

Length:

3275mm

Width:

1813mm

Height:

1920mm

Max Lifting Height:

5850mm

Max Lifting Weight:

2500kg

Hire Desk: 0121 355 4083

hiredesk@greenpower-plant.co.uk | www.greenpower-plant.co.uk

7 Metre



Dimensions

Weight:

6900kg

Length:

4990mm

Width:

2230mm

Height:

2490mm

Max Lifting Height:

7000mm

Max Lifting Weight:

3100kg

9.5 Metre



Dimensions

Weight:

9140kg

Length:

5840mm

Width:

2350mm

Height:

2590mm

Max Lifting Height:

9500mm

Max Lifting Weight:

3500kg



Nationwide Delivery



CPCS Operators



Construction Services



24/7 Call Out



GREEN POWER
OPERATED PLANT HIRE

For all enquiries
for all areas of the
UK please contact:
0121 355 4083

10.5 Metre



Dimensions

Weight:

8850kg

Length:

5380mm

Width:

2290mm

Height:

2490mm

Max Lifting Height:

10220mm

Max Lifting Weight:

3300kg

12.5 Metre



Dimensions

Weight:

9140kg

Length:

5840mm

Width:

2350mm

Height:

2590mm

Max Lifting Height:

12000mm

Max Lifting Weight:

3500kg

14 Metre



Dimensions

Weight:

10880kg

Length:

6230mm

Width:

2350mm

Height:

2590mm

Max Lifting Height:

13780mm

Max Lifting Weight:

3500kg

All machines
are fully
serviced and
tested before
delivery!

Hire Desk: 0121 355 4083

hiredesk@greenpower-plant.co.uk | www.greenpower-plant.co.uk

17 Metre



Dimensions

Weight:	12160kg
Length:	6360mm
Width:	2440mm
Height:	2690mm
Max Lifting Height:	16700mm
Max Lifting Weight:	4000kg

18 Metre



Dimensions

Weight:	11380kg
Length:	6270mm
Width:	2350mm
Height:	2590mm
Max Lifting Height:	17510mm
Max Lifting Weight:	4000kg

20 Metre



Dimensions

Weight:	12985kg
Length:	6810mm
Width:	2440mm
Height:	2720mm
Max Lifting Height:	20000mm
Max Lifting Weight:	4000kg

Hire Desk: 0121 355 4083

hiredesk@greenpower-plant.co.uk | www.greenpower-plant.co.uk

All machines are fully serviced and tested before delivery!



- ✓ Nationwide Delivery
- ✓ CPCS Operators
- ✓ Construction Services
- ✓ 24/7 Call Out



GREEN POWER
OPERATED PLANT HIRE

For all enquiries
for all areas of the
UK please contact:
0121 355 4083



Forklifts

Diesel Forklifts



All Terrain Forklifts



Heavy Duty Forklift



Gas Forklifts



Battery Forklifts



Battery Stacker Lift



Hire Desk: 0121 355 4083

hiredesk@greenpower-plant.co.uk | www.greenpower-plant.co.uk



READY FOR HIRE
0121 355 4083

Heavy Lifts & Roto Telehandlers

**ROTO - 360°
21 Metre**



Dimensions

- Weight:**
17620kg
- Length:**
6860mm
- Width:**
2460mm
- Height:**
3050mm
- Max Lifting Height:**
20600mm
- Max Lifting Weight:**
4999kg

**Heavy Lift
24 Metre**



Dimensions

- Weight:**
17000kg
- Length:**
7750mm
- Width:**
2400mm
- Height:**
2900mm
- Max Lifting Height:**
9620mm
- Max Lifting Weight:**
12000kg

**ROTO - 360°
25 Metre (and above)**



Dimensions

- Weight:**
18600kg
- Length:**
7830mm
- Width:**
2460mm
- Height:**
3050mm
- Max Lifting Height:**
24600mm
- Max Lifting Weight:**
4000kg

Hire Desk: 0121 355 4083

hiredesk@greenpower-plant.co.uk | www.greenpower-plant.co.uk



Skid Steers

**READY
FOR HIRE**
0121 355 4083

S70 Skid-Steer



Dimensions

Operating height	3,051mm
Height with operator cab	1,814mm
Angle of departure	25 °
Ground clearance	141mm
Wheelbase	722mm
Length without attachment	1,925mm
Length with standard bucket	2,472mm
Rollback at ground position	22 °
Dump height with standard bucket	1,934mm
Height to bucket hinge pin	2,399mm
Dump reach at maximum height	400mm
Dump angle at maximum height	34 °
Rollback fully raised at max height	97 °
Width over standard bucket	914mm
Turning radius with bucket	1,557mm
Track, standard tyres	752mm
Width over standard tyres	901mm

S450 Skid-Steer



Dimensions

Operating height	3,558mm
Height with operator cab	1,976mm
Angle of departure	23 °
Ground clearance	214mm
Wheelbase	900mm
Length without attachment	2,499mm
Length with standard bucket	3,172mm
Rollback at ground position	26 °
Dump height with standard bucket	2,157mm
Height to bucket hinge pin	2,781mm
Dump reach at maximum height	587mm
Dump angle at maximum height	40 °
Rollback fully raised at max height	91 °
Width over standard bucket	1,575mm
Turning radius with bucket	1,940.6mm

S550 Skid-Steer



Dimensions

Operating height	3,787mm
Height with operator cab	1,972mm
Angle of departure	24.2 °
Ground clearance	185mm
Wheelbase	1,082mm
Length without attachment	2,657mm
Length with standard bucket	3,378mm
Rollback at ground position	30 °
Dump height with standard bucket	2,205mm
Height to bucket hinge pin	2,908mm
Dump reach at maximum height	467mm
Dump angle at maximum height	42 °
Rollback fully raised at max height	97 °
Width over standard bucket	1,727mm
Turning radius with bucket	2,032mm
Track, standard tyres	1,374mm
Width over standard tyres	1,643mm
Width over tyres, 10 x 16.5, 10-ply, Heavy duty, offset rims	1,520mm

**All machines are available with a full selection of attachments.
Contact hire desk. 0121 355 4083**



Rollers

Trench, Twin Drum & Self Propelled

READY FOR HIRE
0121 355 4083

80cm Twin-Drum



Dimensions
Weight: 1475kg
Length: 2327mm
Width: 865mm
Height: 1731mm
Drum Width: 820mm
Compaction Rating (kN): 23

120cm Twin-Drum



Dimensions
Weight: 2540-2800kg
Length: 2400-2475mm
Width: 1276-1310mm
Height: 1736-1937mm
Drum Width: 1200mm
Compaction Rating (kN): 38-45

135cm Twin-Drum



Dimensions
Weight: 3600-4195kg
Length: 2500-2856mm
Width: 1380-1506mm
Height: 1800-1900mm
Drum Width: 1300-1380mm
Compaction Rating (kN): 37-65

Hire Desk: 0121 355 4083

hiredesk@greenpower-plant.co.uk | www.greenpower-plant.co.uk

All machines are fully serviced and tested before delivery!



Remote Control Roller



Dimensions

Weight:

1480kg

Length:

1770mm

Width:

850mm

Height:

1200mm

Drum Width:

630 or 850mm

Compaction Rating (kN):

80

Pedestrian Roller



Dimensions

Weight:

476kg

Length:

2180mm

Width:

750mm

Height:

1300mm

Drum Width:

710mm

Compaction Rating (kN):

80

7t Self Propelled



Dimensions

Weight:

6840kg

Length:

4680mm

Width:

2100mm

Height:

2790mm

Drum Width:

1680mm

Compaction Rating (kN):

125

13t Self Propelled



Dimensions

Weight:

14955kg

Length:

5686mm

Width:

2436mm

Height:

3030mm

Drum Width:

2200mm

Compaction Rating (kN):

300

20t Self Propelled (8 above)



Dimensions

Weight:

20930kg

Length:

6338mm

Width:

2300mm

Height:

3022mm

Drum Width:

2130mm

Compaction Rating (kN):

326

Hire Desk: 0121 355 4083

hiredesk@greenpower-plant.co.uk | www.greenpower-plant.co.uk



Dumpers Straight & Swivel

**READY
FOR HIRE**
0121 355 4083

1 Tonne Dumper



Dimensions	
Weight:	1295kg
Length:	3192mm
Width:	1115mm
Height:	1773mm
Payload:	1000mm
Site Capacity	500ltr

3 Tonne Dumper



Dimensions	
Weight:	3000kg
Length:	3755mm
Width:	1950mm
Height:	2680mm
Payload:	3000mm
Site Capacity	1250ltr

6 Tonne Dumper



Dimensions	
Weight:	6000kg
Length:	4320mm
Width:	2350mm
Height:	2910mm
Payload:	6000mm
Site Capacity	1950ltr

Hire Desk: 0121 355 4083

hiredesk@greenpower-plant.co.uk | www.greenpower-plant.co.uk



All machines are fully serviced and tested before delivery!

- ✓ Nationwide Delivery
- ✓ CPC Operators
- ✓ Construction Services
- ✓ 24/7 Call Out



GREEN POWER
OPERATED PLANT HIRE

For all enquiries
for all areas of the
UK please contact:
0121 355 4083

6 Tonne Swivel Dumper



Dimensions

Weight:	4270kg
Length:	4590mm
Width:	2095mm
Height:	2160mm
Payload:	6000mm
Site Capacity	3520ltr

9 Tonne Straight Dumper



Dimensions

Weight:	4770kg
Length:	4520mm
Width:	2500mm
Height:	3130mm
Payload:	9000mm
Site Capacity	4700ltr

ADT hire



Machines Available

Hydrema	912F	12T
Hydrema	912G	12T
Bell	B20E	18T
Bell	B20E	18T
Bell	B25E	19.6T
Bell	B30E	20T
Bell	B30E	20T
Volvo	A30G	23.5T
Volvo	A30G	32.5T
CAT	730C	24T
CAT	730C	24T
Bell	B45E	30T
Volvo	A45G	41

Hire Desk: 0121 355 4083

hiredesk@greenpower-plant.co.uk | www.greenpower-plant.co.uk

Scissor Lifts



SJ12



Work Height:	5.48m
Raised Platform Height:	3.65m
Lowered Platform Height:	0.45m
Overall Width:	0.77m
Overall Length:	1.37m
Stowed Height:	1.79m
Platform Width (inside):	0.69m
Platform length (inside):	0.93m

SJ16



Work Height:	6.58m
Raised Platform Height:	4.75m
Lowered Platform Height:	0.45m
Overall Width:	0.77m
Overall Length:	1.37m
Stowed Height:	1.79m
Platform Width (inside):	0.69m
Platform length (inside):	0.93m

SJIII 3215



Work Height:	6.40m
Raised Platform Height:	4.57m
Lowered Platform Height:	0.88m
Overall Width:	0.81m
Overall Length:	1.78m
Stowed Height:	1.88m
Platform Width (inside):	0.66m
Platform length (inside):	1.63m

SJIII 3220



Work Height:	7.92m
Raised Platform Height:	6.10m
Lowered Platform Height:	0.97m
Overall Width:	0.81m
Overall Length:	2.32m
Stowed Height (rails up):	1.97m
Stowed Height (rails down):	1.61m
Platform Width (inside):	0.71m
Platform length (inside):	2.13m

READY FOR HIRE
0121 355 4083

Hire Desk: 0121 355 4083

hiredesk@greenpower-plant.co.uk | www.greenpower-plant.co.uk

All machines are fully serviced and tested before delivery!

SJIII3219



Work Height:	7.62m
Raised Platform Height:	5.79m
Lowered Platform Height:	0.99m
Overall Width:	0.81m
Overall Length:	1.78m
Stowed Height (rails up):	1.99m
Stowed Height (rails down):	1.64m
Platform Width (inside):	0.66m
Platform length (inside):	1.63m

SJIII 3226



Work Height:	9.75m
Raised Platform Height:	7.92m
Lowered Platform Height:	1.14m
Overall Width:	0.81m
Overall Length:	2.32m
Stowed Height (rails up):	2.15m
Stowed Height (rails down):	1.79m
Platform Width (inside):	0.71m
Platform length (inside):	2.13m

SJIII 4626



Work Height:	9.75m
Raised Platform Height:	7.92m
Lowered Platform Height:	1.14m
Overall Width:	1.17m
Overall Length:	2.31m
Stowed Height (rails up):	2.15m
Stowed Height (rails down):	2.15m
Platform Width (inside):	1.07m
Platform length (inside):	2.13m

SJIII 4632



Work Height:	11.58m
Raised Platform Height:	9.75m
Lowered Platform Height:	1.23m
Overall Width:	1.17m
Overall Length:	2.31m
Stowed Height (rails up):	2.24m
Stowed Height (rails down):	1.88m
Platform Width (inside):	1.07m
Platform length (inside):	2.13m

SJIII 4740



Work Height:	13.8m
Raised Platform Height:	12.0m
Lowered Platform Height:	1.37m
Overall Width:	1.19m
Overall Length:	2.40m
Stowed Height (rails up):	2.49m
Stowed Height (rails down):	1.99m
Platform Width (inside):	1.06m
Platform length (inside):	2.19m

SJ6826 RT



Work Height:	9.75m
Raised Platform Height:	7.92m
Lowered Platform Height:	1.23m
Overall Width:	1.76m
Overall Length:	2.72m
Stowed Height (rails up):	2.38m
Stowed Height (rails down):	1.61m
Platform Width (inside):	1.42m
Platform length (inside):	2.44m

Hire Desk: 0121 355 4083

hiredesk@greenpower-plant.co.uk | www.greenpower-plant.co.uk

Scissor Lifts

SJ6832 RT



Work Height:	11.58m
Raised Platform Height:	9.75m
Lowered Platform Height:	1.37m
Overall Width:	1.76m
Overall Length:	2.72m
Stowed Height (rails up):	2.51m
Stowed Height (rails down):	1.75m
Platform Width (inside):	1.42m
Platform length (inside):	2.44m

SJ6832 RTE



Work Height:	11.58m
Raised Platform Height:	9.75m
Lowered Platform Height:	1.37m
Overall Width:	1.76m
Overall Length:	2.72m
Stowed Height (rails up):	2.51m
Stowed Height (rails down):	1.75m
Platform Width (inside):	1.42m
Platform length (inside):	2.44m

SJ8831 RT



Work Height:	11.27m
Raised Platform Height:	9.45m
Lowered Platform Height:	1.50m
Overall Width:	2.21m
Overall Length:	3.53m
Stowed Height (rails up):	2.67m
Stowed Height (rails down):	1.99m
Platform Width (inside):	1.70m
Platform length (inside):	3.40m

SJ8841 RT



Work Height:	14.32m
Raised Platform Height:	12.50m
Lowered Platform Height:	1.75m
Overall Width:	2.21m
Overall Length:	3.53m
Stowed Height (rails up):	2.90m
Stowed Height (rails down):	2.22m
Platform Width (inside):	1.70m
Platform length (inside):	3.40m

SJ9250 RT



Work Height:	17.07m
Raised Platform Height:	15.24m
Lowered Platform Height:	2.01m
Overall Width:	2.34m
Overall Length:	4.47m
Stowed Height (rails up):	3.17m
Stowed Height (rails down):	2.29m
Platform Width (inside):	1.88m
Platform length (inside):	4.27m

Power Tower Platforms



Contact our depot for full range of sizes and platforms
0121 355 4083

Booms



READY FOR HIRE
0121 355 4083

All machines are fully serviced and tested before delivery!

Haulotte Star 10



Work Height:	10m
Platform Height:	8m
Horizontal Reach:	3m
Platform Size:	0.78x9.8m
Stowed Width:	1m
Tailswing:	0
Stowed Height:	1.99m
Transport Height:	1.99m
Stowed Length:	2.7m
Transport Length:	2.7m
Wheelbase:	1.02m
Ground Clearance:	10cm

Genie Z30 Boom



Work Height:	11.14m
Platform Height:	9.14m
Horizontal Reach:	6.53m
Up and Over Height:	3.86m
Platform Size:	1.17m
Stowed Width:	1.19m
Stowed Height:	3.5m
Transport Height:	2.05m
Stowed Length:	5.11m
Transport Length:	3.5m
Wheelbase:	1.58m
Ground Clearance:	0.09m

Genie Z45 Boom



Work Height:	15.87m
Platform Height:	13.87m
Horizontal Reach:	7.62m
Up and Over Height:	7.04m
Platform Size:	1.83m
Stowed Width:	1.83m
Stowed Height:	2.00m
Transport Height:	2.00m
Stowed Length:	5.56m
Transport Length:	5.56m
Wheelbase:	2.03m
Ground Clearance:	0.24m

Booms

SJ45 T



Work Height:	15.60m
Platform Height:	13.77m
Horizontal Reach:	12.12m
Platform Size:	0.91x2.44m
Stowed Width:	2.29m
Stowed Height:	2.39m
Stowed Length:	8.79m
Wheelbase:	2.44m
Ground Clearance:	0.28m

SJ63 AJ



Work Height:	21.21m
Platform Height:	19.38m
Horizontal Reach:	12.19m
Up and Over Height:	8.38m
Platform Size:	0.91x2.40m
Stowed Width:	2.44m
Stowed Height:	2.54m
Stowed Length:	9.14m
Wheelbase:	2.44m
Ground Clearance:	0.33m

SJ85 AJ



Work Height:	27.74m
Platform Height:	25.91m
Horizontal Reach:	17.07m
Up and Over Height:	10.36m
Platform Size:	0.91x2.40m
Stowed Width:	2.49m
Stowed Height:	2.67m
Stowed Length:	11.63m
Wheelbase:	2.84m
Ground Clearance:	0.34m

Nifty Lift HR12L



Work Height:	12.1m
Platform Height:	10.1m
Horizontal Reach:	6.4m
Platform Size:	1.2x0.85m
Stowed Width:	1.79m
Tailswing:	0
Stowed Height:	1.98m
Stowed Length:	3.97m
Wheelbase:	3.63m

Nifty Lift HR12 4x4



Work Height:	12.2m
Platform Height:	10.2m
Horizontal Reach:	6.1m
Platform Size:	1.1x0.65m
Stowed Width:	1.6m
Tailswing:	0
Stowed Height:	1.95m
Stowed Length:	4.1m
Wheelbase:	4.3m

Nifty Lift HR15N



Work Height:	15.5m
Platform Height:	13.5m
Horizontal Reach:	9.7m
Platform Size:	1.5x0.8m
Stowed Width:	1.5m
Tailswing:	0
Stowed Height:	1.99m
Stowed Length:	4.93m
Wheelbase:	3.5m

Booms

Nifty Lift HR15 4x4



Work Height:	15.7m
Platform Height:	13.7m
Horizontal Reach:	9.4m
Platform Size:	1.8x0.85m
Stowed Width:	2m
Stowed Height:	2.1m
Stowed Length:	4.8m
Wheelbase:	3.7m

Nifty Lift HR17N



Work Height:	17m
Platform Height:	15m
Horizontal Reach:	9.7m
Platform Size:	1.5x0.8m
Stowed Width:	1.5m
Stowed Height:	1.99m
Stowed Length:	4.93m
Wheelbase:	3.5m

Nifty Lift HR17 4x4



Work Height:	17.2m
Platform Height:	15.2m
Horizontal Reach:	9.4m
Platform Size:	1.8x0.85m
Stowed Width:	2m
Stowed Height:	2.1m
Stowed Length:	4.8m
Wheelbase:	3.7m

Nifty Lift HR21



Work Height:	20.8m
Platform Height:	18.8m
Horizontal Reach:	13m
Platform Size:	1.8x0.8m
Stowed Width:	2.27m
Stowed Height:	2.18m
Stowed Length:	5.47m
Wheelbase:	3.89m

Nifty Lift HR21 4x4



Work Height:	20.8m
Platform Height:	18.8m
Horizontal Reach:	13m
Platform Size:	1.8x0.8m
Stowed Width:	2.27m
Stowed Height:	2.18m
Stowed Length:	5.47m
Wheelbase:	3.89m

Spider Booms



Full range of Spider Booms available in every size possible.

Please contact the hire desk for more info.

0121 355 4083

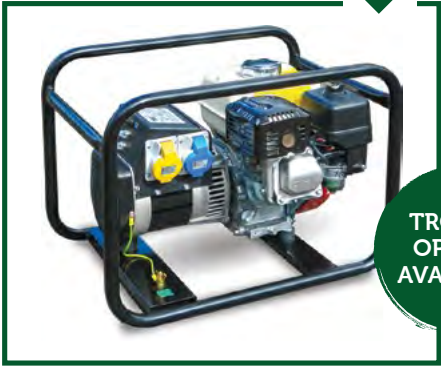


All machines are fully serviced and tested before delivery!

Generators

READY FOR HIRE
0121 355 4083

3KVA Petrol



TROLLEY OPTION AVAILABLE

5KVA Petrol



6KVA Diesel



8KVA Diesel



10KVA Diesel



15KVA Diesel



Hire Desk: 0121 355 4083

hiredesk@greenpower-plant.co.uk | www.greenpower-plant.co.uk

25KVA Diesel



33KVA Diesel



45KVA Diesel



60KVA Diesel



100KVA Diesel



160KVA Diesel





Lighting Towers

**READY
FOR HIRE**
0121 355 4083

X-ECO (LED-6)



6 x 150W LED lighting head
Illuminates 3,800m² @5 lux
Diesel
1kVA 240v Aux Power

X-HYBRID MOBILE



4 x 150W LED lighting head
Illuminates 3,000m² @5 lux
Diesel
16 hour run time in battery mode

MINI-LITE (LED-4)



4 x 200W LED 3600 swivel & tilt
2.6m² of illuminated light coverage
Diesel
4.5kVA (230V) Generator Power

**ECO
HYBRID
LIGHTING
TOWERS**

BABY-LITE 6.5KVA (LED-4)



4 x 200W LED 3600 swivel & tilt
2,300m² Light Coverage
Petrol
6.5kVA (230v/110v) AC Generator Pwr

- ✓ Nationwide Delivery
- ✓ CPCS Operators
- ✓ Construction Services
- ✓ 24/7 Call Out



For all enquiries for all areas of the
UK please contact:
0121 355 4083

Fluid Storage

FUEL BUDDY 950



950 litre capacity

Stackable design

Lockable access/ storage hatch

FUEL BUDDY 2000



2000 litre capacity

Stackable design

Lockable access/ storage hatch

FUEL BUDDY 3000



3000 litre capacity

Stackable design

Lockable access/ storage hatch

FUEL CADDI-105



105 litre capacity

Lockable access/ storage hatch

Towable Diesel Bowser



We now keep a huge range of Bunded Diesel Bowsers ranging from 1000ltr to 2000ltr

- ✓ Nationwide Delivery
- ✓ CPCS Operators
- ✓ Construction Services
- ✓ 24/7 Call Out

Water Bowser



Full range of water bowsers available in 1000ltr and 2000ltr capacity.

Water Bowser Sprinkler



Water bowser fitted with a petrol engine and sprinkler attachment used for water suppression



GREEN POWER
OPERATED PLANT HIRE

For all enquiries
for all areas of the
UK please contact:
0121 355 4083



Pressure Washers

All machines are fully serviced and tested before delivery!

Diesel Washer Bowser



Diesel pressure washer mounted on a towable trailer.

Mini Petrol Washer



Petrol pressure washer mounted on a push around trolley.

Diesel Site Washer



Diesel pressure washer mounted on a push around trolley.



Site Welfare and facilities

Site Containers



We now keep a huge selection of site storage and site containers.

Full Welfare Units



We now keep a huge selection of site storage and site containers.

Site Offices



Full selection of site offices available starting from 10ft to 30ft.

Site Toilets



From static toilets to trailer mounted toilets we have all your welfare covered.

Portaloos



We now keep a huge selection of portaloos.

Site Security Fencing



Full range of site fencing and hoarding panels

Site Barriers



Full range of site barriers and road traffic management system



GREEN POWER
SCAFFOLDING

Ready
to hire
today!

Green Power Scaffolding
Commercial and Domestic
Scaffolding nationwide.

For all your large and small projects
we can cater for your scaffold
requirements.

We provide both designed and
conforming scaffolds which include
erection, dismantling and using
CISRS trained scaffolders.

For a free site survey please contact
the hire desk..

Hire desk:

0121 355 4083

hiredesk@greenpower-plant.co.uk

ECO & Hybrid Equipment

Green Power Plant have invested heavily in to tomorrows technology. We are always searching for the most up to date emission free and Eco friendly plant that is available on the market.

Our Hybrid and Eco plant equipment is being frequently updated as and when technology changes.

Electric Mini Diggers/Dumpers/Telehandlers

Electric Mini Digger



Electric Mini Dumper



Electric Telehandler



ECO/Solar Generators

MGTP 6000 SOLAR HYBRID-GEN



MGTP 10000 SOLAR HYBRID-GEN



ECO
HYBRID
GENERATORS

Solar Tainer Power Source



ECO/Solar Lighting Towers

X-STREET SOLAR (LED-2)



SOLAR
POWER
LIGHTING
TOWERS

X-SOLAR HYBRID MOBILE



SOLAR
POWER
LIGHTING
TOWERS

BASELIGHT LED 6



SET UP
IN UNDER
1MIN
ONLY 35kg



GREEN POWER
PLANT SALES

Machines
ready to
purchase
today!

Due to huge new investment we now have Ex-Hire fleet machines for sale:

- Ex-hire Fleet machines for sale
- Warranties available
- Re-sprays available in brand colour
- Machines signage and graphics
- Financed arranged
- European delivery
- Service plans available
- Part Ex welcome
- Highly competitive pricing

Contact Ryan:

07799 096 337

ryan@greenpower-plant.co.uk



Industrial Heaters

Industrial Heaters

Diesel Space Heater



Oil Fired Radiant Heater



Indirect Oil Fired Heaters



Industrial Heaters

Red Rad 110v Heater



Gas Bin Heater



Gas Space Heater





GREEN POWER
CONSTRUCTION HOIST HIRE

Ready
to hire
today!

GP now offer a full range of hoists for nationwide hire.

We offer a reliable and competitive service for all your site hoists requirements. Our fully qualified team carry the knowledge and experience to handle almost any of your hoisting problems.

- Ladder hoist hire
- Platform hoist hire
- Scaffold hoist hire
- Material hoist hire
- Gantry hoist hire
- Furniture hoist hire

With each hoist we include the following:

- Full testing, inspection and certification
- Weekly or monthly visits to re test.
- Erection and Dismantling
- Free site survey

Contact hire desk:

0121 355 4083

hiredesk@greenpower-plant.co.uk

Plant & Machine Operators



Excavator Operator



All our operators are fully qualified to CPCPS or NPORS accreditation

Dumper Operator



All our operators are fully qualified to CPCPS or NPORS accreditation

Telehandler Operator



All our operators are fully qualified to CPCPS or NPORS.

Boom Operator



All our operators are fully qualified to IPAF along with CSCS accreditation.

Scissor Lift Operator



All our operators are fully qualified to IPAF along with CSCS accreditation.

Spider Operator



All our operators are fully qualified to IPAF along with CSCS accreditation.

Plant Haulage Services



We can offer a full site haulage of all your plant and equipment Nationwide.

Plant Repair & Servicing



Full plant repair and service requirements can now be undertaken by our specialist service team.





GREEN POWER
FIRE AND FLOOD



Green Power are dedicated to supplying the most advanced drying hire equipment available and offer the following service:

- 24hr flood team
- Equipment only/Complete package
- Dehumidifiers
- Air movers/fans
- Air quality and cleaning
- Heating & Lighting
- Detection & monitoring
- Water pump hire
- Nationwide service

Contact hire desk:

0121 355 4083

hiredesk@greenpower-plant.co.uk



Hirelink UK Midlands Ltd is our sister tool hire company. They provide a solution for all our customers to offer tool hire facilities for all credit account customers for GREEN POWER PLANT HIRE.

As the Midlands leading supplier of tools, access, survey and small plant equipment hire, Hire Link UK can support all of your projects whether small or large. They have over 1000 popular products to offer and we can deliver anywhere in the Midlands within 24hrs.

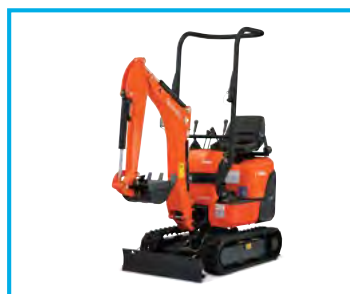
What they offer:

- Tool and equipment hire
- Access and alloy hire
- Generators, compressors and pumps
- Heating, ventilation and calling
- Concrete equipment
- Breaking and drilling
- Pipework and engineering
- Site lighting
- Survey and detection
- Specialist lifting equipment
- Site cement mixers
- Building and site works
- Cleaning and floor care
- Garden and landscaping
- Sawing and cutting

Contact the hire desk for more details:

Hire Desk: 0121 355 2626

boldmerehiredesk@hirelinkuk.co.uk





GREEN POWER SCAFFOLD ERECTION

Scaffold Tower Hire & Erection Service

- Full site survey and tower design
- Highly experience scaffold and erection team
- Single/Multiple tower erection
- Fully insured
- Fully trained
- All RAMS and scaffs tags supplied
- Nationwide service/hire
- Supply only available



ALLOY TOWER HIRE





GREEN POWER



SITESOLUTIONS

VACUUM EXCAVATORS



VACUUM EXCAVATORS

GP Site solutions have invested in its own fleet of 'Vac-ex' Suction Excavators.

The fleet are the safest and most eco-friendly units available on today's market.

The new specialised Vac-ex division, have a team of fully qualified operators and specialist ground-workers to enable us to complete any given project.

- Nationwide Delivery
- Daily / Weekly Hire Rates
- Fully Insured
- Experienced Operators
- Free Site Survey
- Available to hire 24/7

Contact hire desk:

0121 355 4083

hiredesk@greenpower-plant.co.uk



GREEN POWER
WASTE SERVICES



Ready to hire today!



Green Power offers a full range of grab hire and waste services across the UK and have added waste management to its growing portfolio of services.

Primarily targeting the construction sector, we can now offer waste services to the domestic market and offer a full range of the following:

- Grab hire
- Mini Skip Hire
- Midi Skip Hire
- Builders Skip Hire
- Roll on / Roll off container skip Hire

Let us look after your waste services!

Contact hire desk:

0121 355 4083

hiredesk@greenpower-plant.co.uk



SHARK ATTACHMENTS

Hire Desk: 0121 355 4083

ryan@sasattachments.co.uk

www.sasattachments.co.uk

- Breakers • Block Grabs • Adjustable Crane JIB • Fork Extensions • Ripper Tooth • Auger Drive
- Demolition Grabs • Selector Grabs • Excavation Forks • Lift Hooks • Dust Suppression
- Mini Crushers • Compact Plates • Concrete Pouring Buckets

Attachments

**READY
FOR HIRE**
0121 355 4083

OKB150 - 3T Breaker



Suitable Machine (ton)

1.35.5T

Operating Weight (kg)

210kg

Overall Height (mm)

1279mm

Operating Pressure (bar)

80-110

Oil Flow (lpm)

20-40

Tool Specs (mm)

45x500

Back Head Pressure (Bar)

14-17

Impact Rate (bpm)

700-1200

OKB300 - 5T Breaker



Suitable Machine (ton)

5-8T

Operating Weight (kg)

360kg

Overall Height (mm)

1652mm

Operating Pressure (bar)

100-130

Oil Flow (lpm)

40-70

Tool Specs (mm)

68x700

Back Head Pressure (Bar)

14-17

Impact Rate (bpm)

500-900

OKB350 - 8T Breaker



Suitable Machine (ton)

5-9T

Operating Weight (kg)

460kg

Overall Height (mm)

1862mm

Operating Pressure (bar)

100-130

Oil Flow (lpm)

50-90

Tool Specs (mm)

75x712

Back Head Pressure (Bar)

14-17

Impact Rate (bpm)

400-800

OKB1000 - 13T Breaker



Suitable Machine (ton)

10-20T

Operating Weight (kg)

950kg

Overall Height (mm)

2310mm

Operating Pressure (bar)

150-170

Oil Flow (lpm)

80-110

Tool Specs (mm)

100x1000

Back Head Pressure (Bar)

14-17

Impact Rate (bpm)

350-700

OKB1500 - 20T Breaker



Suitable Machine (ton)

13-24T

Operating Weight (kg)

1370kg

Overall Height (mm)

2440mm

Operating Pressure (bar)

150-170

Oil Flow (lpm)

80-110

Tool Specs (mm)

120x110

Back Head Pressure (Bar)

14-17

Impact Rate (bpm)

350-600

- Nationwide Delivery
- CPC Operators
- Construction Services
- 24/7 Call Out



For all enquiries
for all areas of the
UK please contact:
0121 355 4083

Block Grab-1800



SWL

1800kg

Internal Height

800mm

Jaw Width

400-1150mm

Weight

200kg

Block Grab-1600



SWL

1600kg

Internal Height

1000mm

Jaw Width

400-1150mm

Weight

215kg

**READY
FOR HIRE**
0121 355 4083

Adjustable Crane JIB - 2500



Capacity

2500kg

Extension Range

700-3700mm

Fork Pocket

190x80mm

Height

635mm

Width

*640mm

Weight

210kg

* Including restraint pin

Specifically designed and developed for the UK market to lift palletized brick loads

(Note: bricks must be securely bound). Suitable for handling all types of concrete products such as slabs, steel-strapped bricks, blocks kerb stones and paving blocks. Palletized bound loads. Lined with hard rubber pads to minimise damage to load.

Adjustable Crane JIB - 5000

**Capacity**

5000kg

Extension Range

700-3700mm

Fork Pocket

190x80mm

Height

635mm

Width

*640mm

Weight

210kg

* Including restraint pin

Fork Extensions 1.8Mtr

**UDLPER Per Pair**

4000kg

Pocket Width

148x60mm

Length

1829mm

Weight Per Fork

26kg

Fork Extensions 2.4Mtr

**UDLPER Per Pair**

4000kg

Pocket Width

148x60mm

Length

2440mm

Weight Per Fork

39kg

Excavation Riddle Bucket



These are ideal for separating mixed material.

Ripper Tooth



Ripper hooks are demolition sites.

Auger Drive 3-13T Ecx



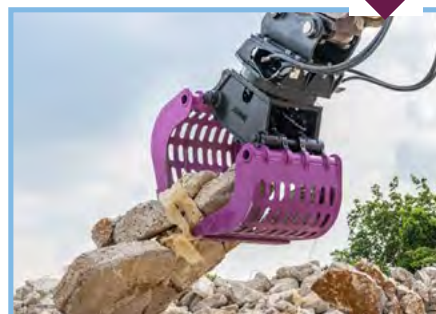
All sizes of Auger attachments available for excavators and skidsteers.

Demolition Grabs



This demolition grab is the perfect tool for collecting various waste on demolition sites.

Selector Grabs



All grabs available for all our excavators for sorting material on site.

Excavation Forks



We keep a huge range of excavator fork attachments for all our excavators.

Lift Hooks



Forklift hook attachments for up to 10 tonne.

Dust Suppression



Dust suppression system to suit any situation.

Mini Crusher



Mini crusher without the need for a hydraulic circuit.

Compact Plates



Compact plate suitable for compacting deep excavations.

Concrete Pouring Bucket



Cubic Metre Concrete Pouring Buckets to suit various size excavators





GREEN POWER

Coppice Farm, Coppice Lane,
Middleton, B78 2BU

Hire Desk: 0121 355 4083
hiredesk@greenpower-plant.co.uk

CREDIT ACCOUNT APPLICATION

COMPANY TRADING NAME & ADDRESS:

GENERAL TELEPHONE NO:

GENERAL FAX NO:

NATURE OF BUSINESS:

ANNUAL TURNOVER £:

DATE INCORPORATED:

NO. OF EMPLOYEES:

COMPANY REGISTRATION NO:

ESTIMATED MONTHLY SPEND:

ACCOUNTS DETAILS

CONTACT NAME:

EMAIL ADDRESS:

TEL NUMBER:

FAX NUMBER:

BUYER DETAILS

CONTACT NAME:

EMAIL ADDRESS:

TEL NUMBER:

FAX NUMBER:

BANKING DETAILS

PAYMENT METHOD: CHEQUE BACS

IF BACS PLEASE ENTER YOUR ACCOUNT DETAILS BELOW:

BANK NAME:

ACCOUNT NUMBER:

SORT CODE:

INVOICE DETAILS

ADDRESS/POSTCODE:

DO YOU REQUIRE ORDER NUMBERS ON THE INVOICES? YES NO

DO YOU REQUIRE OUR INVOICES BY A PARTICULAR DATE IN ORDER TO MEET OUR PAYMENT TERMS? YES NO

IF YES PLEASE ADVISE DATE:

HOW WOULD YOU LIKE TO RECEIVE YOUR INVOICES? EMAIL POST

WHERE DID YOU HEAR ABOUT GREEN POWER OPERATED PLANT HIRE

GOOGLE / SEARCH FACEBOOK TWITTER INSTAGRAM LINKEDIN PUBLICATIONS

GREEN POWER REP GREEN POWER WEBSITE OTHER

PLEASE ENCLOSE A COPY OF YOUR LETTERHEAD - ALL SECTIONS MUST BE COMPLETED IN FULL BEFORE APPLICATION CAN BE ACCEPTED

INSURANCE INFORMATION

INSURANCE BROKER DETAILS:

BROKER NAME:

POLICY NUMBER:

EXPIRY DATE:

LIMIT:

NAME OF CONTACT:

CONTACT EMAIL ADDRESS:

CONTACT TELEPHONE NO.:

CONTACT FAX NO.:

PLEASE PROVIDE COPY INSURANCE CERTIFICATE FOR:

Hired In Plant Insurance/ Contractors All Risks Insurance

IF DRIVING VEHICLES OR PLANT ON PUBLIC HIGHWAYS PLEASE PROVIDE COPY INSURANCE CERTIFICATE FOR:

Comprehensive Road Risk Insurance

Dear Sir / Madam,

RE: HIRED IN PLANT INSURANCE

Please accept this letter as confirmation that we authorise **Green Power Plant Hire Ltd** to approach our insurers / insurance brokers to obtain required insurance information relating to the hire by us of plant / vehicles.

We are also aware of our legal responsibilities that if any item of road registered plant is hired for in excess of 14 days it is our responsibility to ensure that the Motor Insurer's Database (MID) is advised accordingly.

Yours faithfully

for and on behalf of

COMPANY NAME

SIGNED

PRINT NAME

DATE:

POSITION

HIRE, GOODS & SERVICES

We hereby request the company to provide good and/or services subject to company's conditions of business including those listed below.

1. ALL PLANT HIRED UNDER CONSTRUCTION PLANT HIRE ASSOCIATION CONDITIONS (CPA JULY 2011), THESE TERMS AND CONDITIONS WILL APPLY IN PREFERENCE TO AND SUPERCEDE ANY TERMS AND CONDITIONS REFERRED TO, OFFERED OR RELIED ON BY THE HIRER. CLAUSE 21 APPLIES FOR ALL WEEKLY HIRES.
2. FULL TERMS AVAILABLE FROM OUR HEAD OFFICE UPON REQUEST.
3. PUNCTURES AND TYRE DAMAGE IS THE RESPONSIBILITY OF HIRER.
4. ALL DAMAGES ARE CHARGEABLE TO HIRER.
5. HIRER TO INSURE COMPREHENSIVELY AGAINST THIRD PARTY LOSS AND ALL OTHER RISKS.
6. HIRER IS RESPONSIBLE FOR HEALTH AND SAFETY WEEKLY INSPECTIONS.

7. **Green Power Plant Hire Ltd** OPERATE A STRICT CREDIT LIMIT WITH ALL ITS CUSTOMERS. IF YOU EXCEED YOUR LIMIT AT ANYTIME YOU AGREE TO PAY SUFFICIENT FUNDS TO BRING YOUR
8. ACCOUNT BALANCE BELOW YOUR CREDIT LIMIT. WE RESERVE THE RIGHT TO WITHDRAW CREDIT FACILITIES IF THESE TERMS ARE NOT ADHERED TO.
9. IF YOU DO NOT EXCEED YOUR CREDIT LIMIT OUR CREDIT TERMS ARE STRICTLY 30 DAYS NET END OF MONTH.
10. QUERIES TO BE NOTIFIED TO HEAD OFFICE WITHIN TEN DAYS FROM DATE OF INVOICE.
11. IF ANY ITEM OF ROAD REGISTERED PLANT IS HIRED FOR IN EXCESS OF 14 DAYS IT IS THE CUSTOMERS RESPONSIBILITY TO ENSURE THAT THE MOTOR INSURER'S DATABASE (MID) IS ADVISED ACCORDINGLY

Declaration:

This application is to be signed by a Director of the company only. It may be the case that the credit facility may only be granted if a personal guarantee is entered into. If this is the case, we will advise you separately. By signing this document you are only binding your company to **Green Power Plant Hire Ltd** and Conditions.

SIGNED

DATE:

PRINT NAME

POSITION

PLEASE ENCLOSE A COPY OF YOUR LETTERHEAD - ALL SECTIONS MUST BE COMPLETED IN FULL BEFORE APPLICATION CAN BE ACCEPTED



GREEN POWER
CONSTRUCTION SITE SERVICES



GP Construction Site Services

Primarily being a plant hire company, due to our excellent reputation GP have now grown into extended services and offer a far greater range of services from our competitors. Customers now expect more from a plant hire company, and we now offer the following services on a daily basis.

- Road Sweeper and operator hire
- Demolition and Recycling services
- Groundworks and Excavation
- Builders cleans
- Site security 24hr (fully certified)
- Nationwide lock smiths
- Emergency Maintenance services
- Site hoarding and erection
- Emergency water delivery
- Fuel delivery services

We would love to offer our services to your company, contact us today and we shall arrange our company employed representatives to come and visit you at a time that suits you!



Contact our branch manager:
0121 355 4083
hiredesk@greenpower-plant.co.uk



GREEN POWER

OPERATED PLANT HIRE



Hire Desk: 0121 355 4083

hiredesk@greenpower-plant.co.uk

www.greenpower-plant.co.uk