

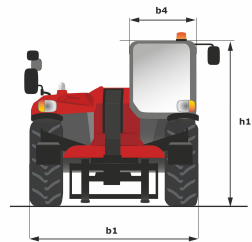
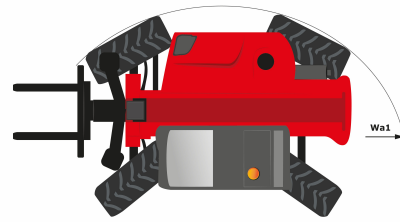
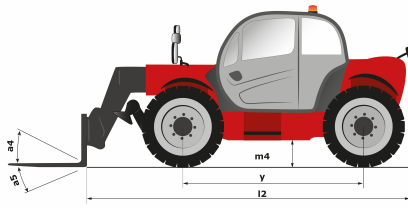
Technical sheet

MT 1335

Telehandlers

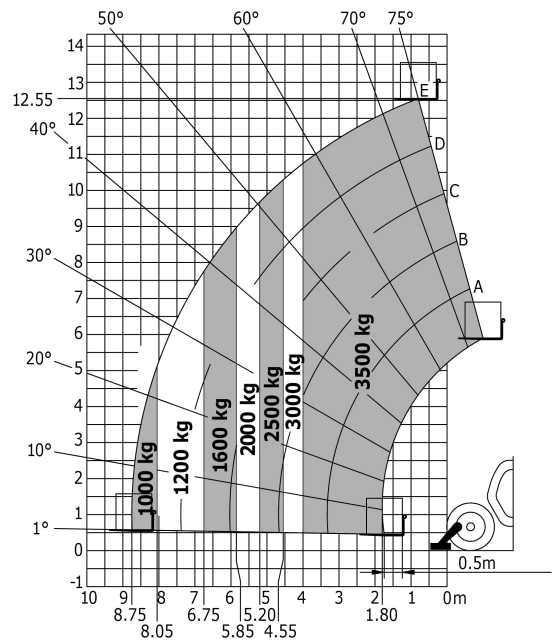
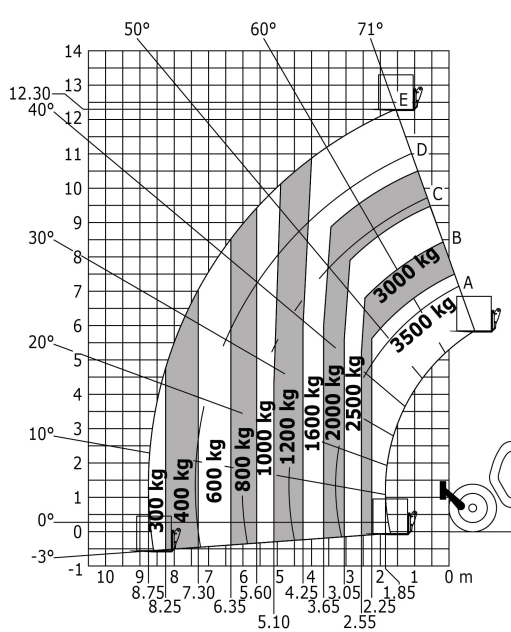


Capacities	Metric	Imperial
Max. capacity	3500 kg	7700 lbs
Max. lift height	12.55 m	41 ft 2 in
Bucket breakout force	6400 daN	14382 lbf
Weight and dimensions		
l2 - Overall length of fork carriage	5.86 m	19 ft 3 in
b1 - Overall width	2.28 m	7 ft 6 in
h17 - Overall height	2.42 m	7 ft 11 in
y - Wheelbase	2.88 m	9 ft 5 in
m4 - Ground clearance	0.41 m	1 ft 4 in
b4 - Overall cab width	0.88 m	2 ft 11 in
Wa1 - Frame outer turning radius	3.65 m	12 ft 8 in
Unladen weight (with forks)	9200 kg	20020 lbs
Standard tyres	Pneumatic	Pneumatic
Performances		
Lifting	10 s	10 s
Lowering	8.50 s	8.50 s
Telescope extension	14.50 s	14.50 s
Retracting the telescope	10 s	10 s
Scoop	4 s	4 s
Dump	4 s	4 s
Engine		
Brand	Perkins	Perkins
Environmental standards	Stage IV / Tier 4 Final	Stage IV / Tier 4 Final
Model	854E-34TA	854E-34TA
Number of cylinders - Capacity	- - 3400 cm ³	- - 207.40 in ³
Power	100 hp / 75 kW	100 hp / 75 kW
Max. torque	420 Nm at 1400 rpm	- at 1400 rpm
Laden drawbar pull	9800 daN	22031 lbf
Transmission		
Type	Torque Converter	Torque Converter
Max. speed of travel (may vary according to the applicable regulation)	25 km/h	15.50 mph
Parking brake	Automatic negative parking brake	Automatic negative parking brake
Service brake	Oil-Immersed Multi-Discs on Front & Rear Axles	Oil-Immersed Multi-Discs on Front & Rear Axles
Hydraulics		
Type of pump	Gear pump	Gear pump
Hydraulic flow rate - Pressure	125 l/min - 270 bar	33 gpm - 3916 psi
Tank capacities		
Hydraulic oil	125 l	46.20 US gal.
Fuel	120 l	31.70 US gal.
Noise & vibration		
Noise at driving position (LpA)	78 dB(A)	78 dB(A)
Noise to environment (LwA)	103 dB(A)	103 dB(A)
Vibration on hands/arms	2.5 m/s ²	-
Miscellaneous		
Steering wheels / Driving wheels	- / 4	- / 4
Safety	Cab ROPS - FOPS Level 2	Cab ROPS - FOPS Level 2
Controls	JSM	JSM



Load chart

Machine on tyres with forks - with levelling





Siège Social
430 rue de l'Aubinière - 44150 Ancenis Cedex - France
Tel: +33(0)2 40 09 10 11 - Fax: +33 (0)2 40 09 10 97
www.manitou.com



This brochure describes versions and configuration options for Manitou products which may be fitted with different equipment. The equipment described in this brochure may be standard, optional or not available depending on version. Manitou reserves the right to change the specifications shown and described at any time and without prior warning. The manufacturer is not liable for the specifications given. For more information, contact your Manitou dealer. Non-contractual document. Product descriptions may differ from actual products. List of specifications is not comprehensive. The logos and visual identity of the company are the property of Manitou and may not be used without authorisation. All rights reserved. The photos and diagrams contained in this brochure are provided for information only.

MANITOU BF SA - Limited company with board of directors - Share capital: 39,547,824 euros - 857 802 508 RCS Nantes